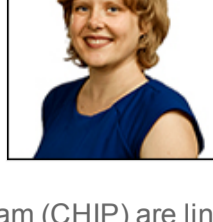


California Advocacy Network for Children with Special Health Care Needs

News, policy updates, resources, events, and advocacy opportunities

National Policy

Opinion: New Administration, New Ways to Improve Care



Medicaid and the Children's Health Insurance Program (CHIP) are linchpins of the system of care, providing insurance coverage for almost half of the nation's children with special health care needs (CSHCN). Edwin Park and Elisabeth Wright Burak, two Georgetown University experts on children's health care financing, propose some ways that the Biden Administration could modify Medicaid and CHIP to better serve CSHCN and their families. [Read more.](#)

Related:

- The Georgetown University Center for Children and Families has launched the [Medicaid Learning Lab](#), a free monthly webinar series to help participants better understand the roles that Medicaid and CHIP play in providing health coverage to children, pregnant women, and families.
- [Maternal and Child Health Priorities for the New Administration](#) (PDF) – from the Association of Maternal and Child Health Programs, including a section on children with special health care needs.

Children with Medical Complexity

Improving Complex Care: Better Care Playbook Redesigned

The *Better Care Playbook*, an online resource for complex care stakeholders that highlights evidence-based and promising practices for improving care, recently was revised and updated. Although focused on adults with complexity, the information may be of interest for pediatrics. [Read more.](#)

Research

Managing Chronic Pain in Children

The World Health Organization has issued evidence-informed recommendations for the management of chronic pain in children ages 0-19. These guidelines focus on physical, psychological, and pharmacological interventions for the management of primary and secondary chronic pain to improve quality of life. [See the guidelines.](#)

In Brief

- [Impact of Medical Home-Consistent Care and Child Condition on Select Health, Community, and Family Level Outcomes Among Children with Special Health Care Needs](#) – from Taylor & Francis Online

COVID-19 Information

Our COVID-19 [web page](#) offers additional information and resources.

- [States Begin to Incorporate Children into Their COVID-19 Vaccine Distribution Plans](#), a new issue brief from the [National Academy for State Health Policy](#), reports on how some states are tackling issues such as whether schools should require vaccinations, and how to prioritize children who have medical conditions or who live in congregate housing.
- The Centers for Disease Control and Prevention and the US Department of Education have issued [guidance on reopening schools to students with disabilities](#), which is described in an article in [Disability Scoop](#).
- Beginning March 15, California is [expanding vaccination eligibility](#) to individuals ages 16-64 with certain diseases and disabilities, including developmental disabilities and high-risk conditions.

Telehealth

Webinar: Best Practices and Strategies for Tele-Social Care

| | |
|-----------------|--|
| Date | Thursday, February 25 |
| Time | 12 to 1 p.m. Pacific Time |
| Sponsors | National Center for Complex Health and Social Needs and the Center for Health and Social Care Integration at Rush University |
| Details | The pandemic has changed how people with complex needs engage in care and receive social support. A key method to address the change is via tele-social care, the telephonic or virtual engagement with individuals to prevent and address health-related social risk factors and social needs. Webinar sponsors have compiled on-the-ground lessons, implications, and strategies for high-quality tele-social care into a virtual guide (PDF) for staff in both the medical and social sectors. Register for this webinar, which will highlight the guide. Not pediatric specific. |

Health Equity

Webinar: Health Equity and Social Determinants of Health for Children with Disabilities and Other Special Health Care Needs



Dr. Amy Houtrow, from the University of Pittsburgh, presents a course on health equity, and discusses how social determinants of health affect children with special needs, including the impact of COVID-19 on care. [Listen to the webinar.](#)

Special Education

- [How to Hold and Implement an IEP During Our New Normal – and What Can Families Request?](#) – A Q&A from the Child Neurology Foundation, updated February 16, covers multiple issues about children returning to school, including assessments, services, masks, transportation, and more.

California Policy

Webinar: Timely Action for Navigating Youth Mental Health Services in Medi-Cal Managed Care and Schools

| | |
|----------------|--|
| Date | Thursday, March 4 |
| Time | 10 to 11:30 a.m. Pacific Time |
| Sponsor | California Children's Trust |
| Details | The Governor's proposed budget sets aside \$400 million for Medi-Cal Managed Care Organizations (MCOs) to support mental health services in schools. This webinar will help education and youth advocates understand the role of MCOs and how to leverage funding opportunities to help youth heal and thrive. Read more and register. |

In Brief

- The Department of Health Care Services has [announced a delay in the planned April 1 implementation of Medi-Cal Rx](#) (PDF), under which Medi-Cal pharmacy benefits would be administered through fee-for-service. No new date has been announced.
- [Post-COVID-19 Public Health Emergency Telehealth Policy Recommendations](#) (PDF) – Issued February 2 by the Department of Health Care Services
- The state's Electronic Visit Verification policy has been updated to conform to federal reporting requirements for both live-in and non-live-in providers. [Read fact sheets on each.](#)

Resources

- [Exceptional Parent Magazine February Issue – Diet and Nutrition](#)

In the News

- [People with Intellectual Disabilities Are Often Overlooked in Pandemic Response](#)
NPR, 2/12/21
- [Lawmakers Make Push to Fully Fund IDEA](#)
Disability Scoop, 2/5/21

We'd like to hear from you

Let us know what's happening with your organization or family. Email newsletter assistant editor Ali Rivera at Ali.Rivera@lpfch.org with your news or updates. Or contact newsletter editor: Eileen Walsh at Eileen.Walsh@lpfch.org.

[Join the Network](#)

To see past issues, visit the [Network Newsletter Archive](#).

The California Advocacy Network for Children with Special Health Care Needs is a collaborative organized by the Lucile Packard Foundation for Children's Health. Through grantmaking, advocacy, and communications, the Foundation promotes a system of care that improves the lives of children with special health care needs and their families.

